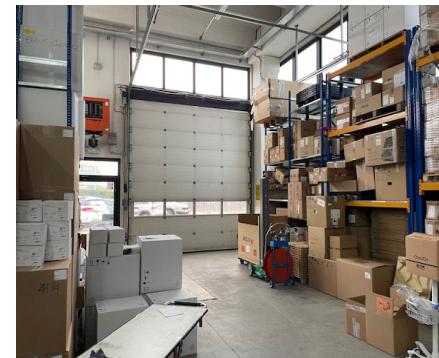


Key Features

Industrial/office complex located in the municipality of Assago with the following features:

- Total GLA: 1,550 m² ca. of which
 - Office: 500 m² (independent unit)
 - Warehouse/Office: 1,050 m² of which 550 m² dedicated to productive activities
- Height: 6,00 m
- External area: 1,600 m² ca. + parking spaces
- Availability: 3/6 months from signing a sales agreement



Surface

Total GLA

1,550 m² of which
Warehouse/Office: 1,050 m²
Office: 500 m² (independent unit)

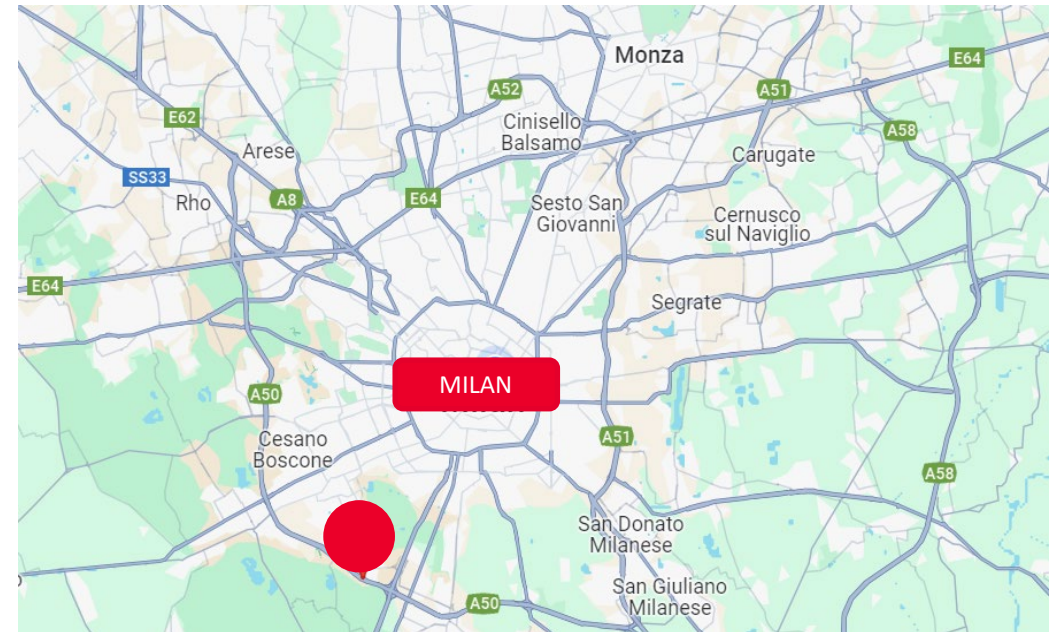
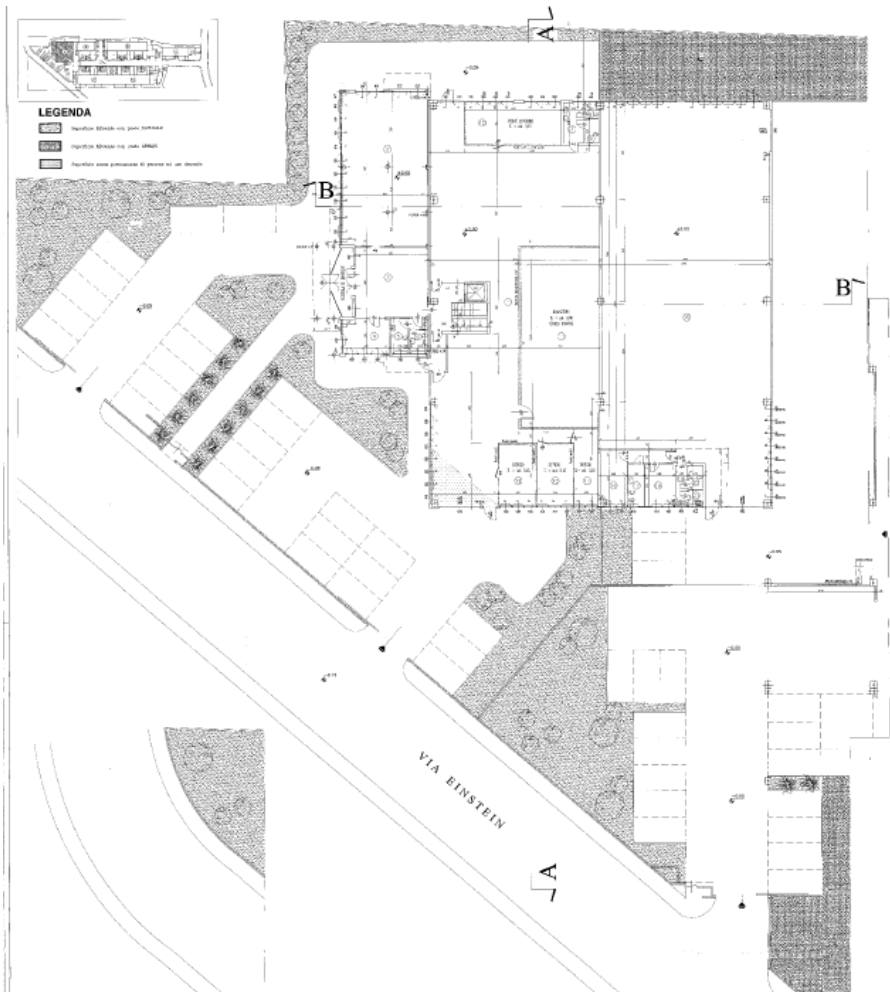
Per maggiori informazioni:

Marzio Granata
02 63799 1
marzio.granata@cushwake.com

Filippo Di Caprio
02 63799 1
filippo.dicaprio@cushwake.com

Via Turati 16/18
20121 Milano
cushmanwakefield.com

GEERAL PLAN



Location

The complex is located in the municipality of Assago in the province of Milan, only 2 km away from the «Assago» exit of A7 Motorway «Autostrada dei Giovi», 9 km from the Milan city centre and 25 km from Pavia.

Distance

A7 Motorway	2 km
Milan city centre	9 km
Pavia	25 km
Novara	50 km